



Steel Frames



Smythes Creek

20 sq 4 2 2 353m²

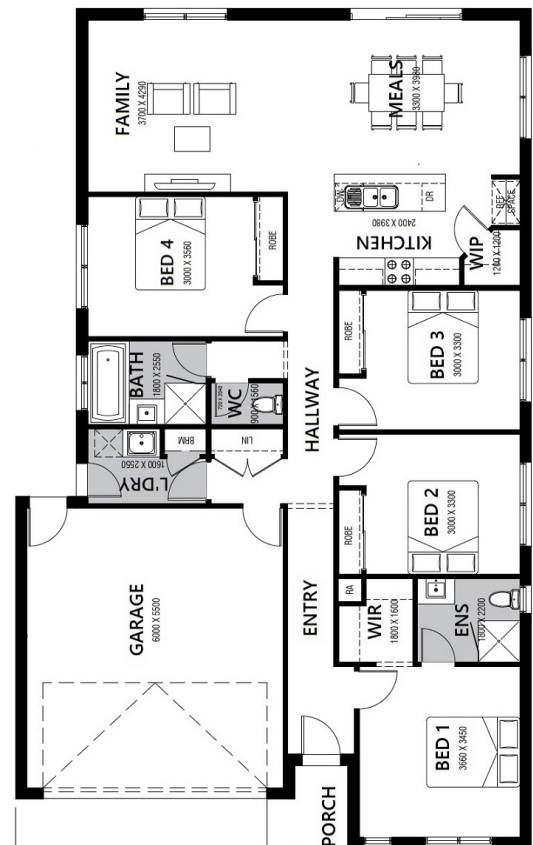
House & Land Package

Lot 1022 Kimball Street (Pinnacle), Smythes Creek

\$547,900 INC FHB- FULL STEEL FRAME TURNKEY HOME

AMAZING DISPLAY HOME INCLUSIONS

- Carpet & tile flooring throughout
- 2550mm ceiling heights and LED Downlights throughout
- Caesar Stone benchtops to kitchen and bathrooms
- Framed mirror or vinyl sliding doors to robes.
- Stainless Steel Westinghouse Underbench Oven & Gas Cooktop.
- Stainless Steel Dishwasher
- Kitchen with 20mm Caesar Stone benchtops
- Brick infills over all external openings.
- Driveway and remote control garage
- Front and rear landscaping
- Blinds to all windows and sliding doors
- 2000mm nominated high semi-framed shower screens with pivot door and clear glass, and tiled shower bases
- Window locks to all openable windows.
- Clothesline and letter box
- Flyscreens with aluminium mesh to all openable windows
- Chrome finish double towel rails and toilet roll holders.
- Ducted heating to bedrooms and living areas
- NBN connection
- Multiple facade options



Contact - Brendan Lubeek

Mobile: 0419 545 178 | Email: brendan@hlvictoria.com.au

Pricing based on developer supplied engineering & plan of subdivision. Land prices and availability prior to purchase will need to be confirmed. Community Infrastructure Levy and Asset Protection not included in pricing and to be arranged directly by client with developer, (where applicable). Subject to developer and council approval. Package price does not include any stamp duty, government, legal or bank charges. Alterations made may incur additional charges. H&L Victoria PL reserves the right to withdraw or amend pricing and inclusions without notice. Images for illustrative purposes only and may depict upgrade options available at additional charges such as lighting, window furnishings, timber look garage door and timber windows.