

**FULL
TURNKEY
PACKAGE**



Smythes Creek

22 sq  4  2  2  529m²

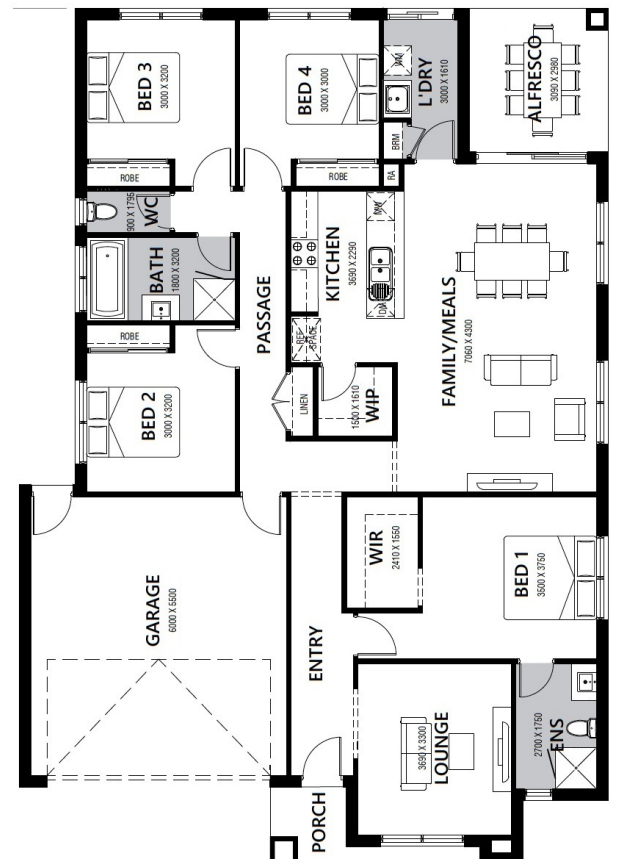
House & Land Package

Lot 769 Patriot Crescent (Pinnacle), Smythes Creek

**\$644,300 INC FHB-PREMIUM
TURNKEY Montville 22sq**

OVER \$70K OF PREMIUM INCLUSIONS

- Front & rear landscaping
- Half share fencing & colour-through driveway
- Flooring throughout
- Higher ceilings
- Stone benchtops to kitchen & bathrooms
- LED downlights throughout
- Modern appliances including dishwasher
- Overhead cupboards to kitchen
- Blinds throughout
- 5kW split system cooling
- Ducted heating throughout
- Zero-step tiled shower bases
- Chrome finish double towel rails and toilet roll holders
- Framed mirror or vinyl sliding doors to robes
- Brick infills over all external openings
- Remote control garage
- Window locks & flyscreens to all openable windows
- Clothesline and letter box
- NBN connection
- Multiple facade options



Contact - Brendan Lubeek

Mobile: 0419 545 178 | Email: brendan@hlvictoria.com.au

Pricing based on developer supplied engineering & plan of subdivision. Land prices and availability prior to purchase will need to be confirmed. Community Infrastructure Levy and Asset Protection not included in pricing and to be arranged directly by client with developer, (where applicable). Subject to developer and council approval. Package price does not include any stamp duty, government, legal or bank charges. Alterations made may incur additional charges. H&L Victoria PL reserves the right to withdraw or amend pricing and inclusions without notice. Images for illustrative purposes only and may depict upgrade options available at additional charges such as lighting, window furnishings, timber lock garage door and timber windows.