

**FULL  
TURNKEY  
PACKAGE**



**Smythes Creek**

22 sq  4  2  2  555m<sup>2</sup>

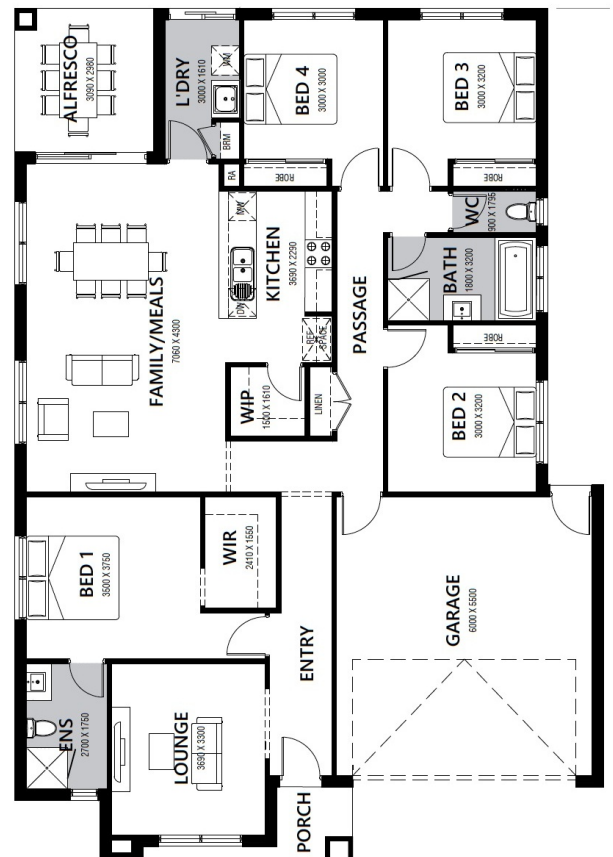
### House & Land Package

NEAR TITLED Lot 763 Cadillac Way (Pinnacle) , Smythes Creek

**\$653,800 INC FHB-PREMIUM  
TURNKEY Montville 22sq**

OVER \$70K OF PREMIUM INCLUSIONS

- Front & rear landscaping
- Half share fencing & colour-through driveway
- Colorbond roof
- Flooring throughout
- Higher ceilings
- Stone benchtops to kitchen & bathrooms
- LED downlights throughout
- Modern appliances including dishwasher
- Overhead cupboards to kitchen
- Blinds throughout
- 5kW split system cooling
- Ducted heating throughout
- Zero-step tiled shower bases
- Chrome finish double towel rails and toilet roll holders
- Framed mirror or vinyl sliding doors to robes
- Brick infills over all external openings
- Remote control garage
- Window locks & flyscreens to all openable windows
- Clothesline and letter box
- NBN connection



**Contact - Erin King**

Mobile: 0413 148 873 | Email: [erin@hlvictoria.com.au](mailto:erin@hlvictoria.com.au)